

PRAIRIE CONSERVATION FORUM

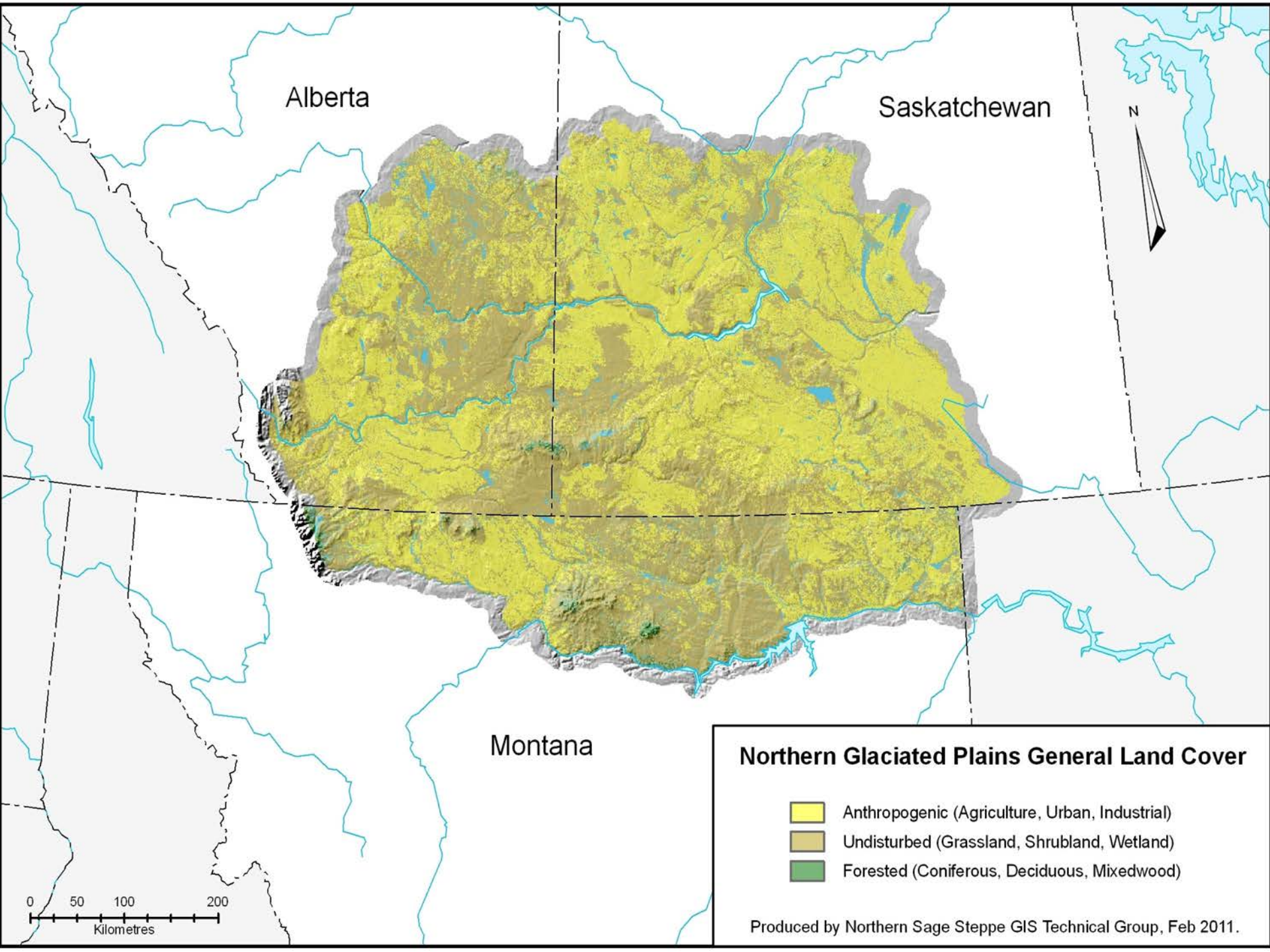
The Prairie Conservation Forum: Who We Are and What We Do

Robert Oakley, B.Sc., P.Ag

AIA Annual Conference

April 1, 2018

Banff, AB



Alberta

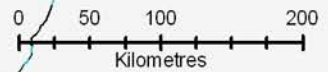
Saskatchewan

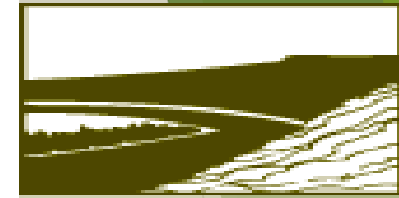
Montana

Northern Glaciated Plains General Land Cover

- Anthropogenic (Agriculture, Urban, Industrial)
- Undisturbed (Grassland, Shrubland, Wetland)
- Forested (Coniferous, Deciduous, Mixedwood)

Produced by Northern Sage Steppe GIS Technical Group, Feb 2011.





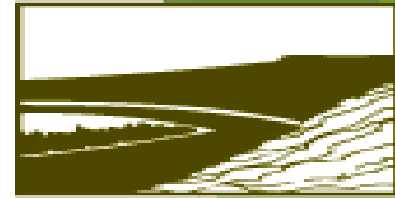
PRAIRIE CONSERVATION FORUM

The PCF is a not-for-profit organization founded in 1989

Currently consists of members from about 50 member organizations ranging across industry, government, NGO's and individuals.

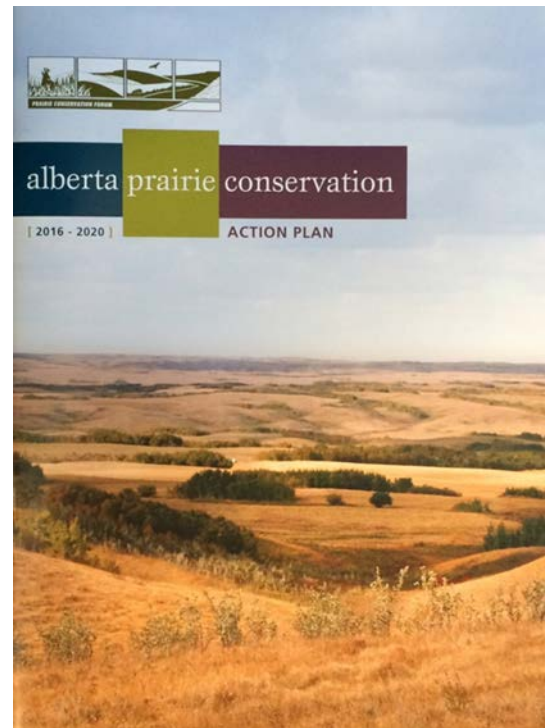
The PCF works in an advisory and education role to provide tools and ideas to aid in grassland conservation.

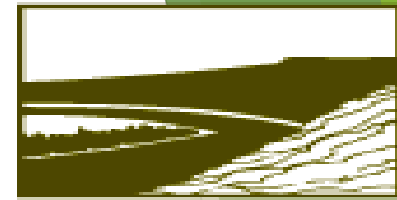
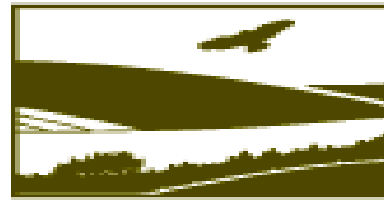
The PCF has a number of committees made up by its membership to provide focused expertise to specific projects.



PRAIRIE CONSERVATION FORUM

- ▶ One of these committees is responsible for preparing the Prairie Conservation Action Plan (PCAP).
- ▶ The PCAP is done in 5 year intervals and the current version runs from 2016-2020.





PRAIRIE CONSERVATION FORUM

The PCAP is a 5 year blueprint for conserving, protecting and managing native prairie and parkland species, communities and habitats.



Photo credit: Todd Kemper

PCAP Long Term Outcomes

1. Maintain Large Native Prairie and Parkland Landscapes
2. Conserve Connecting Corridors for Biodiversity
3. Protect Isolated Native Habitats



PCAP Long Term Outcomes

Of these outcomes, 2 will be discussed in this session. They are:

- Maintaining large native prairie and parkland landscapes
- Conserving connecting corridors for biodiversity

The third topic of this presentation is:

Contemporary Challenges – Renewable Energy

Questions?



Photo credit: Francois Blouin